



## HUSQVARNA 535i XP®

For professionally oriented users who want a lightweight, high performance chainsaw. Perfect for carpenters, contractors, tree care workers and olive farmers. Features excellent ergonomics, high performance and high chainspeed.



### Retained bar nuts

The retaining function prevents losing the bar nuts.



### Efficient brushless motor

Our in-house developed, advanced brushless motor is 25 % more efficient than a standard brush motor. This means that the motor provides a high and consistent torque.

### Flip-up tank cap

The flip-up tank cap is easy to open.



### Gear up for nonstop operation

Our battery accessories allow you to carry on and get the job done as quickly and efficiently as possible.



## FEATURES

- The flip-up tank cap is easy to open.
- In-house developed brushless motor provides a high and consistent torque.
- The retaining function prevents losing the bar nuts.
- Gear up for nonstop operation
- Petrol performance
- Allows you to quickly switch the same battery between different product applications and keep working.

### Technical specifications

<b>BATTERY</b>	
Battery type	Lithium Ion
Motor type	BLDC (brushless)
<b>DIMENSIONS</b>	
Product size height	23 cm
Product size length	43 cm
Product size width	25.5 cm
Weight (excl. battery and cutting equipment)	2.6 kg
<b>EQUIPMENT</b>	
Chain speed at max power	20 m/s
Pitch	1/4", 3/8"
Recommended bar length, max	35 cm
Recommended bar length, min	25 cm
Sprocket type	Spur 6
<b>LUBRICANT</b>	
Oil pump type	Automatic
Oil tank volume	0.2 l
<b>SOUND AND NOISE</b>	
Sound power level, guaranteed (LWA)	106 dB(A)
Sound power level, measured	104 dB(A)
Sound pressure level at operators ear	93 dB(A)
<b>VIBRATION</b>	
Equivalent vibration level (ahv, eq) front handle	2.5 m/s <sup>2</sup>
Equivalent vibration level (ahv, eq) rear handle	2.8 m/s <sup>2</sup>

## ACCESSORIES



HUSQVARNA BATTERY BLI100  
2.6AH  
967 09 18-01



HUSQVARNA BATTERY BLI200  
5.2AH  
967 09 19-01



HUSQVARNA BLI300 BATTERY  
9.4AH  
967 07 19-01



HUSQVARNA BATTERY CHARGER  
QC330 330W  
967 09 14-02



HUSQVARNA CHARGER QC500  
967 09 15-02

HUSQVARNA BATTERY CHARGER  
QC80F  
967 62 83-01



HUSQVARNA INVERTER VI600F  
967 62 85-02



HUSQVARNA BATTERY BAG  
585 37 18-01



HUSQVARNA BATTERY BOX S  
585 42 87-01



CHAINSAW BAG  
576 85 91-01



SAW CHAIN H38 CHAMFER  
CHISEL PIXEL 3/8" MINI 1.1  
581 80 79-45



SAW CHAIN H38 CHAMFER  
CHISEL PIXEL 3/8" MINI 1.1  
581 80 79-52



SAW CHAIN H00 1/4" 1,3 MM  
501 84 40-60



SAW CHAIN H00 1/4" 1,3 MM  
501 84 40-68



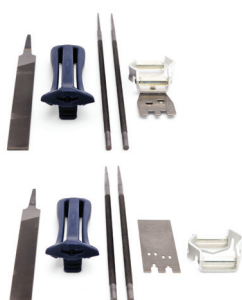
1/4" CARVING SMALL BAR MOUNT  
587 39 44-60



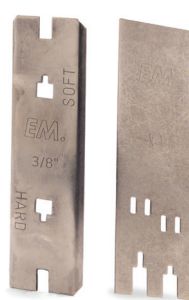
1/4" CARVING SMALL BAR MOUNT  
587 39 44-68



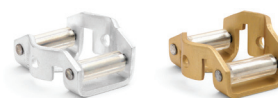
EYELET  
578 07 71-01



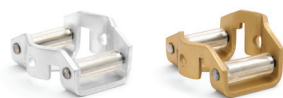
FILE KIT  
580 68 75-01



DEPTH GAUGE 3/8  
505 69 81-03



FILE GAUGES  
579 55 88-01



FILE GAUGES  
505 69 81-18



COMBINATION GAUGE  
580 68 74-01



INTENSIVE CUT FILES  
510 09 57-01



INTENSIVE CUT FILES  
510 09 57-02