



HUSQVARNA T535i XP®

For professional users who want a lightweight, extremely easy-to-use top handle chainsaw with high performance. Perfect for arborists. A robust chainsaw with excellent ergonomics, high performance and high chainspeed.



Belt eye let

Makes it quick and easy to connect the saw to the climbing harness.



Efficient brushless motor

Our in-house developed, advanced brushless motor is 25 % more efficient than a standard brush motor. This means that the motor provides a high and consistent torque.

Flip-up tank cap

The flip-up tank cap is easy to open.



Gear up for nonstop operation

Our battery accessories allow you to carry on and get the job done as quickly and efficiently as possible.



FEATURES

- The flip-up tank cap is easy to open.
- In-house developed brushless motor provides a high and consistent torque.
- Quick connection to the climbing harness
- Gear up for nonstop operation
- Petrol performance
- Allows you to quickly switch the same battery between different product applications and keep working.

Technical specifications	
BATTERY	
Battery type	Lithium Ion
Battery voltage	36 V
Cells per battery	20
Motor type	BLDC (brushless)
DIMENSIONS	
Gauge	1.0 mm
Product size height	23 cm
Product size length	26.5 cm
Product size width	21.5 cm
Weight (excl. battery and cutting equipment)	2.4 kg
EQUIPMENT	
Chain speed at max power	20 m/s
Gauge	1.0 mm
Recommended bar length, max	35 cm
Recommended bar length, min	25 cm
Sprocket type	Spur 6
LUBRICANT	
Oil pump capacity Max	8 ml/min
Oil pump type	Automatic
Oil tank volume	0.2 l
SOUND AND NOISE	
Sound power level, guaranteed (LWA)	106 dB(A)
Sound power level, measured	104 dB(A)
Sound pressure level at operators ear	93 dB(A)
VIBRATION	
Equivalent vibration level (ahv, eq) front handle	2 m/s ²
Equivalent vibration level (ahv, eq) rear handle	2.4 m/s ²

ACCESSORIES



HUSQVARNA BATTERY BLI100
2.6AH
967 09 18-01



HUSQVARNA BATTERY BLI200
5.2AH
967 09 19-01



HUSQVARNA BATTERY CHARGER QC330 330W
967 09 14-02

HUSQVARNA CHARGER QC500
967 09 15-02



HUSQVARNA BATTERY CHARGER QC80F
967 62 83-01



HUSQVARNA INVERTER VI600F
967 62 85-02



HUSQVARNA BATTERY BAG
585 37 18-01



HUSQVARNA BATTERY BOX S
585 42 87-01



CHAINSAW BAG
576 85 91-01



SAW CHAIN H38 CHAMFER
CHISEL PIXEL 3/8" MINI 1.1
581 80 79-45



SAW CHAIN H38 CHAMFER
CHISEL PIXEL 3/8" MINI 1.1
581 80 79-52



SAW CHAIN H00 1/4" 1,3 MM
501 84 40-60



SAW CHAIN H00 1/4" 1,3 MM
501 84 40-68



1/4" CARVING SMALL BAR MOUNT
587 39 44-60



1/4" CARVING SMALL BAR MOUNT
587 39 44-68



CHAINSAW HOOK, PLASTIC
580 80 03-01



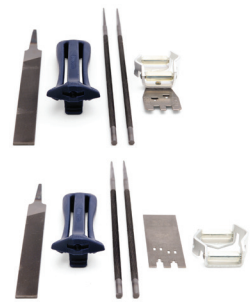
CHAINSAW HOOK, METAL
577 43 79-01



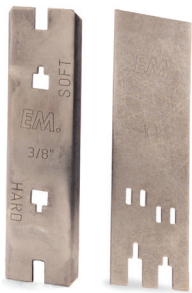
CHAINSAW STROP
577 43 80-01



EYELET
578 07 71-01



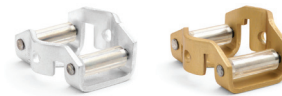
FILE KIT
580 68 75-01



DEPTH GAUGE 3/8
505 69 81-03



FILE GAUGES
579 55 88-01



FILE GAUGES
505 69 81-18



COMBINATION GAUGE
580 68 74-01



INTENSIVE CUT FILES
510 09 57-01



INTENSIVE CUT FILES
510 09 57-02