



Operator's Manual

user manual, maintenance instructions and spare parts

26B-SP / 28BV-SP Blower/Vacuum



Read this manual carefully before operating the machine

Original Instructions Version June 17 - 270617v1

CONTENTS

HOW TO READ THE MANUAL

Certain paragraphs in the manual contain particularly significant information and are marked with various levels of highlighting with the following meaning:

NOTE or IMPORTANT

These give details or further information on what has already been said and aim to prevent damage to the machine or cause other damage.

Non-observance will result in the risk of serious injury or death to oneself or others.



Getting to know the machine	2
Safety regulations	5
Operating instructions	9
1. Prepare the machine	9
2. Preparing to work	10
3. Using the machine	12
4. Operating modes	14
5. Routine maintenance	15
6. Warranty Work	18
7. Diagnostics	18
Technical information	19

GETTING TO KNOW THIS MACHINE

MACHINE DESCRIPTION AND USAGE

This machine is a portable gardening device fitted with an engine and, more precisely, a blower/suction device for DIY use. It basically consists of an engine that activates a rotor which is able to produce a high-speed air flow. When the accessory tools are fitted, the air flow can be regulated to operate in either blower or suction mode.

Intended use

This machine was designed and manufactured for:

- the movement and accumulation, by blowing, of leaves, grass, debris of various limited weight and modest dimensions.
 - vacuum collection of leaves, grass, various debris of limited weight and modest dimensions, excluding liquids of any kind.
- Any other use differing from the above mentioned ones could be hazardous, harm people and/or damage things and the machine.

User types

This machine is intended for use by consumers, i.e. non-professional operators. The machine is intended for “DIY” use only.

Improper use

The machine must not be used for accumulation and collection of inflammable or explosive products, hot embers or combustible material without a flame, lit cigarettes, pieces of glass, sharp objects, metal objects, stones and any other object that could be dangerous to the operator and others.

Examples of improper use may include, but are not limited to:

- aiming towards persons and/or animals;
- allowing objects to enter the suction grid;
- using the machine without the accessories specifically supplied by the manufacturer for specific uses, or use of accessories in a way not intended in these instructions;
- use of the machine by more than one person.

IDENTIFICATION LABEL (SYMBOL) AND MACHINE COMPONENTS

Your machine must be used carefully. Symbols have therefore been placed on various parts of the machine to remind you of the main precautions to be taken. Their meaning is explained below. You are also asked to carefully read the safety regulations in the specific chapter of this manual. Replace damaged or illegible labels.



(a). Operating the engine switch flipping the switch to the "0" position, immediately the engine stops. "0" Stop, "1" Start



(b). Warning! Danger. The failure to use this machine correctly can be hazardous for oneself and others. Read the instruction manual before using the machine.



(c). Keep all persons away from the work area whilst using.



(d). If you are using the machine every day in normal conditions, you can be exposed to a noise level of 85 dB (A) or higher. Wear safety glasses and hearing protection.

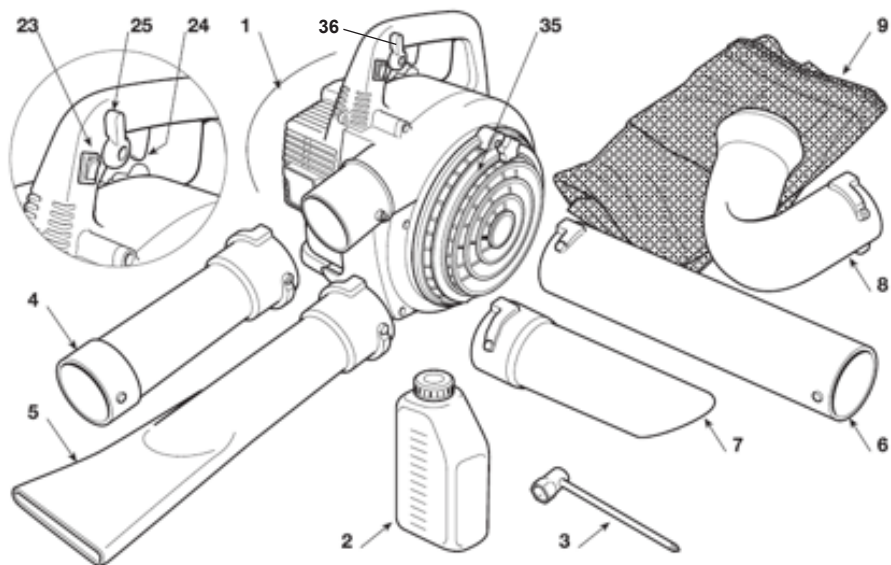
(e). Wear gloves and protective footwear!



(f). Danger of dismemberment! Never use the machine with the grille open.



(g). Guarantee A-weighted emission noise power lever



1 Power unit

2 Graduated fuel bottle

3 Tool with screwdriver
and spark plug wrench

TO USE AS BLOWER -

4 First blower tube

5 Second blower tube

TO USE AS VACUUM -

6 First vacuum tube

7 Second vacuum tube

8 Bag tube

9 Collection bag

21 Upper handgrip

22 Lower handgrip

23 Engine stop switch

24 Throttle control

25 Throttle lock

26 Recoil starter

27 Choke

28 Primer

31 Fuel tank cap

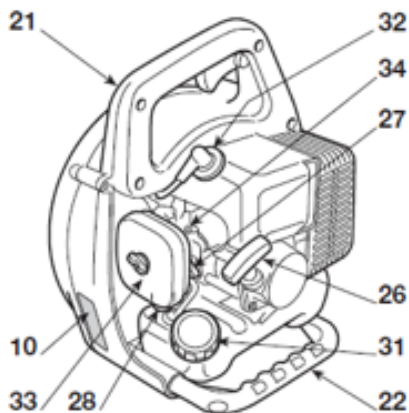
32 Spark plug

33 Air filter cover

34 Idle speed adjustment

35 Intake grill

36 Cruise control lever



SAFETY REGULATIONS

This machine is extremely noisy and operators must wear acoustic protection equipment.

A) TRAINING

- 1) WARNING! Read these instructions carefully before operating the machine. Become acquainted with the controls and the proper use of the machine. Learn how to stop the engine quickly.
- 2) Never allow children or people unfamiliar with these instructions to use the machine. Local laws can restrict the minimum age of the operator.
- 3) Never use the machine if the user is tired or unwell, or has taken medicine, drugs, alcohol or any substances which may slow his reflexes and compromise his judgement.
- 4) Bear in mind that the operator or user is responsible for accidents or unexpected events occurring to other people or their property.
- 5) If the machine is sold or lent to others, make sure that the operator reads the user instructions contained in this manual.

B) PRELIMINARY OPERATIONS

- 1) Always wear adequate clothing which does not hamper movements when using the machine.
 - Always wear slim-fitting protective clothes, anti-vibration gloves, protective goggles, half-mask respirator, protective earplugs, anti-shear safety boots with non-slip soles.
 - Never wear scarves, shirts, necklaces or any hanging or flapping accessory that could catch in the machine.
 - Tie your hair back if it is long.
- 2) WARNING: DANGER! Petrol is highly flammable.
 - Keep the fuel in containers which have been specifically manufactured for such use;
 - Add fuel, using a funnel, only outdoors; do not smoke during this operation and each time fuel is handled;
 - Slowly open the fuel tank to allow the pressure inside to decrease gradually;
 - Add fuel before starting the engine; never remove the tank cap or add fuel while the engine is running or when the engine is hot;
 - If you have spilt some fuel, do not attempt to start the engine but move the machine away from the area of spillage and avoid creating any source of ignition until the fuel has evaporated and fuel vapours have dissipated;
 - Always put the tank and fuel container caps back on and tighten well;
 - Immediately clean up all traces of fuel spilt on the machine or on the ground;
 - Never start the machine in the same place you refilled it with fuel; the engine must be started in an area at least 3 metres from where you refilled the fuel tank;
 - Make sure your clothing does not come into contact with the fuel, if this happens, change your clothes before starting the engine.

4) Replace faulty or damaged silencers.

5) Before using the machine, carry out an accurate inspection of the machine's efficiency and in particular:

- the throttle trigger must move freely, it must not need forcing and should return automatically and rapidly back to the neutral position;
- the engine stop switch must easily move from one position to the other;
- the electric cables and in particular the spark plug cable must be in perfect condition to avoid the generation of any sparks and the cap must be correctly fitted on the spark plug;
- the machine handgrips and protection devices must be clean and dry and well fastened to the machine;
- the guards must never be damaged;
- the rotor must never be damaged;
- the bag must never be damaged.

6) Thoroughly inspect the whole work area and use a rake or yard brush to manually loosen debris and remove anything that could be projected by the machine (when used as a blower) or block the vacuum tube (when used as a vacuum collector) or be a hazardous source (stones, branches, wire, bones etc.)

C) DURING USE

1) Do not operate the engine in a confined space where dangerous carbon monoxide fumes can develop.

2) Work only in daylight or with good artificial light in good visibility conditions.

3) When working in dry dusty soil conditions, it is recommended to moisten the surface slightly.

4) Try not to cause any disturbance. Use this machine at reasonable times of the day only (not early morning or late evening when the noise could cause disturbance).

5) Do not mount equipment or accessories on the machine not foreseen or approved by the manufacturer.

6) Never use the machine: Without mounting all the accessories foreseen for each use (as blower or vacuum collector); When people, especially children or pets are nearby; In confined spaces, in the presence of fumes, in an explosive environment or close to inflammable materials or electrical equipment.

7) Take on a firm and well-balanced position:

- where possible, avoid working on wet, slippery ground or in any case on uneven or steep ground that does not guarantee stability for the operator;
- never run, but walk carefully paying attention to the lay of the land and any eventual obstacles;
- assess the potential risks of the ground to be worked and take all necessary precautions to ensure your own safety, especially on slopes or on bumpy, slippery or unstable ground.

8) Make sure the machine is securely held when you start the engine:

- check that there is nobody within at least 15 metres of the machine's range of action.
- do not direct the silencer and therefore the exhaust fumes towards inflammable materials.

9) Do not change the engine settings or over-speed the engine.

10) Do not strain the machine too much and do not use a small machine for heavy-duty works. If you use the right machine, you will reduce the risk of hazards and improve the quality of your work.

11) Ensure the machine does not come into contact with foreign bodies and possible flying debris and dust being thrown up by the air; do not direct the air jet in the direction of people or animals.

12) When used as a blower always pay the utmost attention to prevent removed material or dust from injuring people or animals or damaging property. Always assess wind direction and never work against the wind. Always extend the blower tube correctly so that the air flow works close to the earth.

13) Never insert objects into the vacuum inlet (when being used as a vacuum collector) and avoid the intake of large objects that could damage the rotor.

14) During use keep your hands well away from the intake grille and from the air outlet and do not obstruct the air vents.

15) Stop the engine:

- when mounting or removing accessories for blowing or collecting;
- whenever you leave the machine unattended;
- before refuelling;
- when moving between work areas.

16) Stop the engine and disconnect the spark plug cap:

- before checking, cleaning or working on the machine;
- after the intake of a foreign body. Inspect the machine for any damage and make repairs before restarting it again;
- if the machine starts to vibrate abnormally (find and remove the cause of the vibration immediately);
- when the machine is not in use.

17) To avoid the risk of fire, do not leave the machine with the engine hot on leaves, dry grass or other inflammable material.

18) WARNING – If something breaks or an accident occurs while working, turn off the engine immediately and move the machine away to prevent further damage; if an accident occurs with injuries or third parties are injured, carry out the first aid measures most suitable for the situation immediately and contact the medical authorities for any necessary health care. Carefully remove any debris that might cause damage or harm persons or animals should they not be seen.

19) WARNING The noise and vibration levels shown in these instructions are the maximum levels for use of the machine. Insufficient maintenance has a significant impact on vibration and noise emissions. Consequently, it is necessary to take preventive steps to eliminate possible damage due to high levels of noise and stress from vibration. Maintain the machine well, wear ear protection devices, and take breaks while working.

20) Rotating parts can cause serious injury, avoid contacting the rotating parts when they are still rotating.

21) Don't operate the machine near open windows.

22) Operating the machine with a stable speed and gripping the handle firmly with suitable force can decrease the vibration level. Low engine speed means low-noise level, so operate the machine at the lowest engine speed necessary to accomplish the task. During a working day, you should take frequent and adequate breaks to prevent damage from vibration and damage to the ears.

23) Prolonged exposure to vibrations can cause injuries and neurovascular disorders (also called "Raynaud's syndrome" or "white hand"), especially to people suffering from circulation disorders. The symptoms can affect the hands, wrists and fingers and are shown through loss of sensitivity, torpor, itching, pain and discolouring of or structural changes to the skin. These effects can be worsened by low ambient temperatures and/or by gripping the handgrips excessively tightly. If the symptoms occur, the length of time the machine is used must be reduced and a doctor consulted.

D) MAINTENANCE AND STORAGE

- 1) **WARNING:** Before cleaning or doing maintenance work, disconnect the spark plug cap and read the relevant instructions. Wear proper clothing and protective gloves whenever your hands are at risk.
- 2) **WARNING:** Never use the machine with worn or damaged parts. Faulty or worn-out parts must always be replaced and not repaired. Only use original spare parts: the use of non-original and/or incorrectly fitted parts will jeopardize the machine, impair safety and may cause accidents or personal injuries for which the Manufacturer is under no circumstance liable or responsible.
- 3) Any adjustments or maintenance operations not described in this manual must be carried out by your Dealer or a specialized Service Centre with the necessary knowledge and equipment to ensure that the work is done correctly maintaining the machine's original safety level. Any operations performed in unauthorized centres or by unqualified persons will totally invalidate the Warranty and all obligations and responsibilities of the Manufacturer.
- 4) Keep all nuts and screws tight to be sure the machine is always in safe working condition. Routine maintenance is essential for safety and for maintaining a high performance level.
- 5) Do not perform any work on the machine that is not described in this manual unless adequately skilled with appropriate tools.
- 6) Do not store the machine with fuel in the tank in an area where the fuel vapours could reach an open flame, a spark or a strong heat source.
- 7) Allow the engine to cool down before storing the machine in any enclosure.
- 8) To reduce fire hazards, keep the engine, exhaust silencer and fuel storage area free from sawdust, branches, leaves, or excessive grease; never leave containers with the debris inside the storage area.
- 9) If the fuel tank has to be emptied, this should be done outdoors once the engine has cooled down.
- 10) Wear work gloves when performing all maintenance.
- 11) Before putting the machine away, check you have removed wrenches or tools used for maintenance.
- 12) Store the machine out of the reach of children!
- 13) Often inspect the bag to avoid wear and a decrease in quality.

E) TRANSPORTATION AND HANDLING

- 1) Whenever the machine is to be handled or transported you must:
 - Turn off the engine and disconnect the spark plug cap;
 - Only hold the machine using the handgrips and position the tubes so that they do not obstruct.
- 2) When using a vehicle to transport the machine, remove the tubes and position it so that it can cause no danger to persons and fasten it firmly in place to avoid it from tipping over, which may cause damage or fuel spillage.

F) ENVIRONMENTAL PROTECTION

Environmental protection should be a priority of considerable importance when using the machine, for the benefit of both social coexistence and the environment in which we live. Try not to cause any disturbance to the surrounding area.

- Scrupulously comply with local regulations and provisions for the disposal of oils, petrol, damaged parts or any elements which have a strong impact on the environment; this waste must not be disposed of as normal waste, it must be separated and taken to specified waste disposal centres where the material will be recycled.
- Scrupulously comply with local regulations and provisions for the disposal of waste materials.
- At the time of decommissioning, do not pollute the environment.

OPERATING INSTRUCTIONS

1. PREPARE THE MACHINE

The machine can be used as both a blower and a vacuum collector (vacuum function on 28BV-SP only); for both of these uses it is necessary to correctly arrange the appropriate accessories included with the equipment.

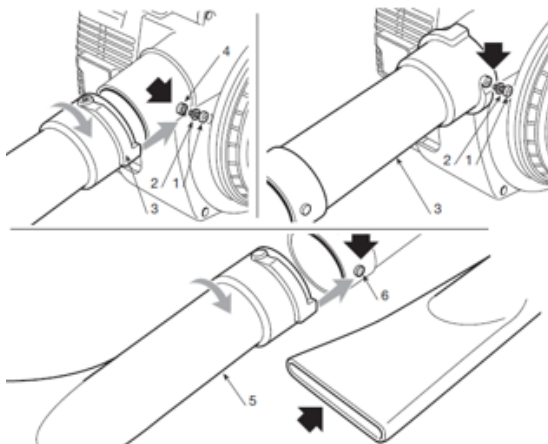


Unpacking and completing the assembly should be done on a flat and stable surface, with enough space for moving the machine and its packaging, always making use of suitable equipment.

IMPORTANT The safety systems prevent the engine from starting if the vacuum or blower tubes are not assembled correctly.

1.1 USE AS A BLOWER

- Remove the screw (1) and its washers (2).
- Align the first blower tube compartment (3) with the protrusion (4) of the air outlet, push the tube and turn it 90° clockwise, in order to permanently fix it in place.
- Fix the tube (3) to the air outlet using the screw (1) and its washers (2).
- Align the second blower tube compartment (5) with the protrusion (6) of the first tube, push the tube and turn it 90° clockwise, in order to permanently fix it in place.



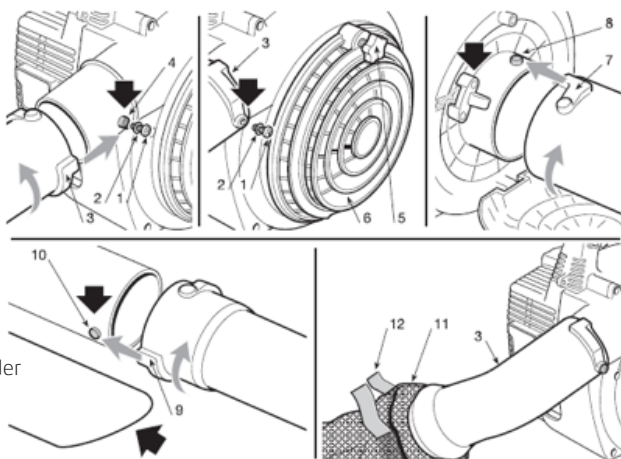
NOTE The machine is correctly assembled when the flat part of the blower chute is pointed towards the ground. The engine can not start if you do not assemble the blower tube when using as a blower.

1.2 USE AS A VACUUM COLLECTOR

- Remove the screw (1) and its washers (2).
- Align the housing of the bag tube (3) with the protrusion (4) of the air outlet, push the tube and turn it 90° anticlockwise, in order to permanently fix it in place.

The machine is correctly assembled when the tube's terminal chute is pointed downwards and to the left of the operator.

- Fix the tube (3) to the air outlet using the screw (1) and its washers (2).
- Loosen the knob (5) and open the protection grille (6).
- Align the first vacuum tube compartment (7) with the protrusion (8) of the inlet, push the tube and turn it 90° clockwise, in order to permanently fix it in place.
- Align the second vacuum tube compartment (9) with the protrusion (10) of the first tube, push the tube and turn it 90° clockwise, in order to permanently fix it in place.



The machine is correctly assembled when the rounded part of the chute is pointed towards the ground.

- Insert the bag tube end (3) in to the bag (11) and close the opening with the supplied Velcro strap (12).
- Hang the bag over your shoulder and adjust the height using the strap.

The engine can not start if you do not assemble the vacuum tube when using as a vacuum.

2. PREPARING TO WORK

2.1 CHECKING THE MACHINE

Before starting work please:

- check that all the screws on the machine are tightly fastened;
- when used as a vacuum collector, make sure the bag is fitted correctly and that the zip is closed;
- check that the air filter is clean;
- check that the hand grips are well fastened;
- prepare accessories according to the type of work (as blower or vacuum collector) and make sure they are correctly mounted;
- fill with fuel as indicated below.

2.2 PREPARING THE FUEL MIXTURE

This machine is fitted with a two-stroke engine which requires a mixture of petrol and 2-Stroke oil.

IMPORTANT Using petrol alone will damage the engine and is cause for invalidation of the warranty.

IMPORTANT Use only quality fuels and oils to maintain high performance and guarantee the duration of the mechanical parts over time.

2.2.1 Petrol characteristics

Only use unleaded petrol with a fuel grade of at least 90 RON.

IMPORTANT Unleaded petrol tends to create deposits in the container if left for more than 2 months, Always use fresh petrol!

2.2.2 Oil characteristics

Only use top quality synthetic oil specifically for two-stroke engines. Your Dealer can provide you with oils which have been specifically developed for this type of engine, and which are capable of guaranteeing a high level of protection.

2.2.3 Preparation and preservation of the fuel mixture

Petrol and the fuel mixture are highly inflammable!



- Keep the petrol and fuel mixture in certified fuel containers, in a safe place, away from any flames or heat sources.
- Never leave the containers within the reach of children.
- Never smoke whilst preparing the mixture and avoid inhaling the petrol fumes.

Two-Stroke Fuel

Refuel outdoors on bare ground, restart engine at least 5m away from refuelling stop. The engine is lubricated by oil mixed into petrol. prepare a mixture of Unleaded petrol and semi-synthetic two-stroke oil that meets the specifications of: API TC, ISO-L-EGC, JASO FC (Low Smoke) oil.

Recommended mixing ratio is 40:1

FUEL WITH NO OIL (RAW PETROL) will cause severe damage to the engine which is not covered by manufacturer's warranty.

Use fresh, unleaded petrol (90 RON) and semi-synthetic oil specially made for high performance two-stroke engines. Mix in a ratio of 40 parts petrol to 1 part oil. By using two-stroke oil specially made for two-stroke engines you will reduce the formation of ash and carbon deposits on the spark plug, piston, exhaust muffler and cylinder as well as reducing emissions of harmful exhaust gases.

Oil for 4-cycle engine should not be used as two-stroke lubrication oil as it can cause fouling of the spark plug, exhaust port blocking, piston ring sticking and other internal engine damage.

NOTE

Due to increased Ethanol content in petrol we recommend the use of B3C Ethanol Shield 2-Stroke Oil, or Ethanol Shield Fuel Stabiliser to protect your MITOX® engine against the harmful effects of Ethanol.

Visit www.b3cfuel.co.uk for more information.



IMPORTANT The fuel mixture tends to age. Do not prepare excessive amounts of the fuel mixture to avoid the formation of deposits.

IMPORTANT Keep the petrol and fuel mixture containers separate and easily identifiable to avoid the mistake of using one in place of the other.

IMPORTANT Periodically clean the petrol and fuel mixture containers to remove any eventual deposits.

2.3 REFUELING



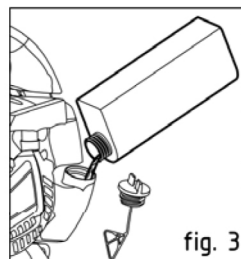
Never smoke whilst refuelling and avoid inhaling the petrol fumes. Carefully open the tank top as pressure could have formed inside.

Before refuelling:

- Place the machine on a flat stable surface, with the fuel tank cap facing upwards.
- Clean the fuel tank cap and the surrounding area to avoid any dirt from entering the tank during refilling.
- Carefully open the fuel tank cap to allow the pressure inside to decrease gradually.

To fuel:

- Shake the can with the fuel mixture well.
- Using a filtered funnel, pour an amount of fuel mixture suited to the work to be performed.
- Refuel without filling the tank to the rim (Fig. 3).



Always close the fuel tank cap firmly. Immediately clean all traces of fuel which may have dripped on the machine or the ground and do not start the engine until the petrol fumes have dissipated.

3. USING THE MACHINE

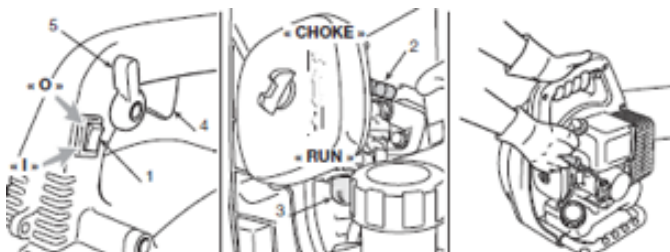
3.1 STARTING THE MACHINE

The engine must be started in an area at least 3 metres from where you refilled the fuel tank. Before starting the engine, place the machine on stable ground and make sure blowing or vacuum tubes are not crushed.

3.1.1 Cold starting (Fig. 4)

A "cold" start of the engine means starting it after at least 5 minutes from when it was switched off or after refuelling.

1. Set the switch (1) to position «I».
2. Operate the choke, moving lever (2) to <CHOKE>
3. Press the primer device button (3) 7 to 10 times to prime the carburettor.
4. Hold the machine firmly with one hand on the handgrip (6), in order not to lose control of the machine during starting.
5. Pull the starter rope slowly for 10 - 15 cm until you feel some resistance, then tug it hard a few times until you hear the engine turn over.

Fig.4

IMPORTANT To avoid breaking the starter rope, do not pull the whole length of it or let it slide along the edge of the rope guide hole. Release the starter gradually, to avoid letting it fly back uncontrollably.

5a. Move the choke lever (2) to the run position.

6. Pull the starter rope again, fully squeezing the throttle (4) until the engine starts.

7. Let the engine run at idle for at least 2–3 minutes before using the machine.

IMPORTANT If the starter rope is pulled repeatedly with the choke on, it may flood the engine and make starting difficult. If you happen to flood the engine, repeat the hot start procedure a few times to eliminate any excess fuel.

3.1.2 Hot starting

When hot starting (immediately after stopping the engine), follow the procedure indicated above in points 1 - 4 - 5 - 6.

3.2 ADJUSTING THE SPEED (Fig. 4)

Rotor rpm must be proportionate to the type of work and regulated by the throttle trigger (4) located on the upper hand grip. The throttle trigger can be held in any required position by engaging the cruise control lever (5).

3.3 STOPPING THE ENGINE (Fig. 4)

To stop the engine:

- Return the cruise control lever up (5).
- Release the throttle control (4).
- Set the switch (1) to position «0».

4. OPERATING MODES

4.1 USE AS A BLOWER



The machine must always be firmly gripped with your right hand on the upper hand grip during work.

The Engine speed should be adjusted to the type of material to be removed:

- use the engine at low speed for lightweight material on the lawn;
- use the engine at average speed to move grass and lightweight leaves on pavement or solid ground;
- use the engine at high speed for heavier materials like fresh snow or voluminous dirt.



Always pay the utmost attention to prevent removed material or dust from injuring people or animals or damaging property. Always assess the wind direction and never work against the wind.

4.2 USE AS A VACUUM COLLECTOR



The machine must always be firmly held with both hands during work. Place your left hand on the upper hand grip and your right hand on the lower hand grip so that the bag is on the right-hand side of the operator.

When used as a vacuum collector, it is best to use the engine at average/high speed. During collection, keep the rounded end of the tube a few centimeters off the ground. The bag also works as a filter similar to a common home vacuum. For this reason it is best that:

- it is always free to expand and the support strap is not tangled.
- it is not fully filled.
- collected objects that could jeopardise integrity are promptly removed.



To empty the bag:

- switch the engine off.
- open the zipper (1) and empty the bag without disconnecting it from the fitting tube.

IMPORTANT When used as a vacuum collector do not collect damp grass or leaves to avoid clogging the rotor and bag.

IMPORTANT When using the machine as a vacuum collector, there is a risk of inadvertently suctioning objects which can obstruct the machine and block the rotor. In this case:

- switch the motor off immediately - remove the spark plug cap.
 - disassemble the vacuum tube.
 - remove the foreign body from inside the vacuum inlet.
- Check that nothing is blocking the rotor before using the machine again.

IMPORTANT A too full bag reduces the machine's efficiency and could cause the engine to over heat.

4.3 END OF OPERATIONS

When you have finished your work:

- Switch off the engine as indicated above (Chap. 3.3).
- Empty the bag if used as a vacuum collector.

5. ROUTINE MAINTENANCE



Correct maintenance is essential to maintain the original efficiency and safety of the machine over time.

During maintenance operations:

- Remove the spark plug cap.
- Wait until the engine is sufficiently cold.
- Wear protective gloves.
- Do not work on the machine if not in possession of the necessary skills and tools.

5.1 STORAGE

After every working session, clean the machine thoroughly to remove all dust and debris, and repair or replace any faulty parts. The machine must be stored in a dry place away from the elements.

5.2 CYLINDER AND SILENCER

To reduce fire risks, periodically clean the cylinder fins with compressed air and clear the silencer area from dust, leaves or other debris.

5.3 STARTING SYSTEM

To avoid overheating and damage to the engine, always keep the cooling air vents clean and free of sawdust and debris. The starter rope must be replaced as soon as it shows signs of wear.

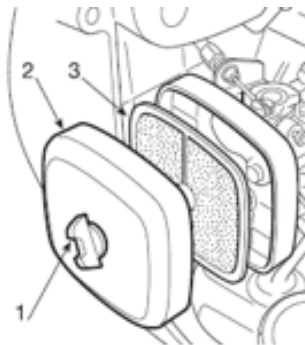
5.4 NUTS AND SCREWS

Periodically check that all the nuts and screws are securely tightened and the hand grips are tightly fastened.

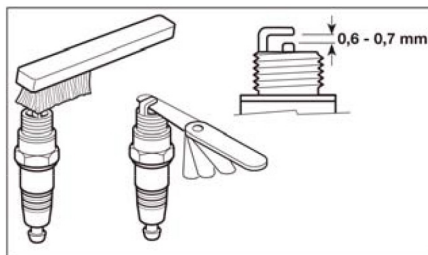
IMPORTANT Cleaning the air filter is essential to guarantee the efficiency and duration of the machine. Do not work with a damaged filter or without a filter, as this could permanently damage the engine. It must be cleaned after every 8-10 working hours.

Clean the filter as follows:

- Loosen the knob (1), remove the cover (2) and the filter element (3).
- Wash the filter element (3) with soap and water. Do not use petrol or other solvents.
- Leave the filter to dry in the open air.
- Replace the filter element (3) and the cover (2) and tighten the knob (1).

**5.6 CHECKING THE SPARK PLUG**

Periodically remove and clean the spark plug using a metal brush to get rid of any deposits. Check and reset the correct distance between the electrodes. Replace the spark plug and fasten it firmly using the supplied wrench. The spark plug must be replaced with one with the same characteristics whenever the electrodes have burnt or the insulation has worn, and in any case every 50 working hours.

**5.7 CARBURETTOR ADJUSTMENTS**

IMPORTANT When the engine tends to switch off or there is not much difference in speed when using the throttle trigger, it is recommended to adjust the carburation settings. This operation must be performed by your Dealer only.

5.8 LONG PERIODS OF NON-USE

IMPORTANT If the machine will not be used for a period of more than 1 month it is recommended to remove the fuel to avoid difficulty when you wish to use the machine and to prevent permanent damage to the engine. (SEE 5.8.1 STORAGE FOR MORE INFORMATION)

5.8.1 Storage

Before putting the machine away:

- Empty the fuel tank.
- Start the engine and run it at idle until it comes to a halt, so that it uses up all the fuel that is left in the carburettor.
- Allow the engine to cool down and remove the spark plug cap.

5.8.2 Restarting work

When you wish to start using the machine again:

- Replace the spark plug cap.
- Prepare the machine as indicated in chapter 2, entitled “Preparing for work”.

The following intervals apply to normal operating conditions only. If your daily working time is longer or operating conditions are difficult (very dusty work area, etc.), shorten the specified intervals accordingly.		Before starting working	After finishing work daily	After each refueling stop	Weekly	Monthly	Every 12 months	If problem	If damaged	If required
Complete machine	Visual inspection (condition, wear, leaks)	*		*						
	Clean		*							
Control Handle	Check operation	*		*						
Air filter	Clean						*	*		*
	Replace								*	*
Filter in fuel tank	Check							*		
	Replace filter						*		*	*
Carburettor	Check idle setting	*		*						
	Readjust idle (1)									*
Spark plug	Readjust electrode gap							*		
	Replace after 100 hours of operation									
Cooling inlets	Clean									*
All accessible screws	Check							*		
	Retighten									*
Anti-vibration elements	Check	*						*		*
	Replace ¹⁾								*	
Safety labels	Replace								*	
Muffler	Clean ¹⁾							*		

1) MITOX recommends that this work be performed by a MITOX servicing dealer.
Use only the spare parts recommended by MITOX.

6. WARRANTY WORK

This work must be performed exclusively by your Dealer. All and any operations performed in unauthorised centres or by unqualified persons will totally invalidate the warranty.

6.1 FUEL FILTER

Inside the fuel tank there is a filter which prevents impurities from entering the engine.

The filter should be replaced once a year by your Dealer.

6.2 CARBURETTOR ADJUSTMENTS

The carburettor is tuned by the manufacturer to achieve maximum performance in all situations, with a minimum emission of toxic gas in compliance with the regulations in force. In the case of poor performance contact your Dealer for a check of the carburation and engine.

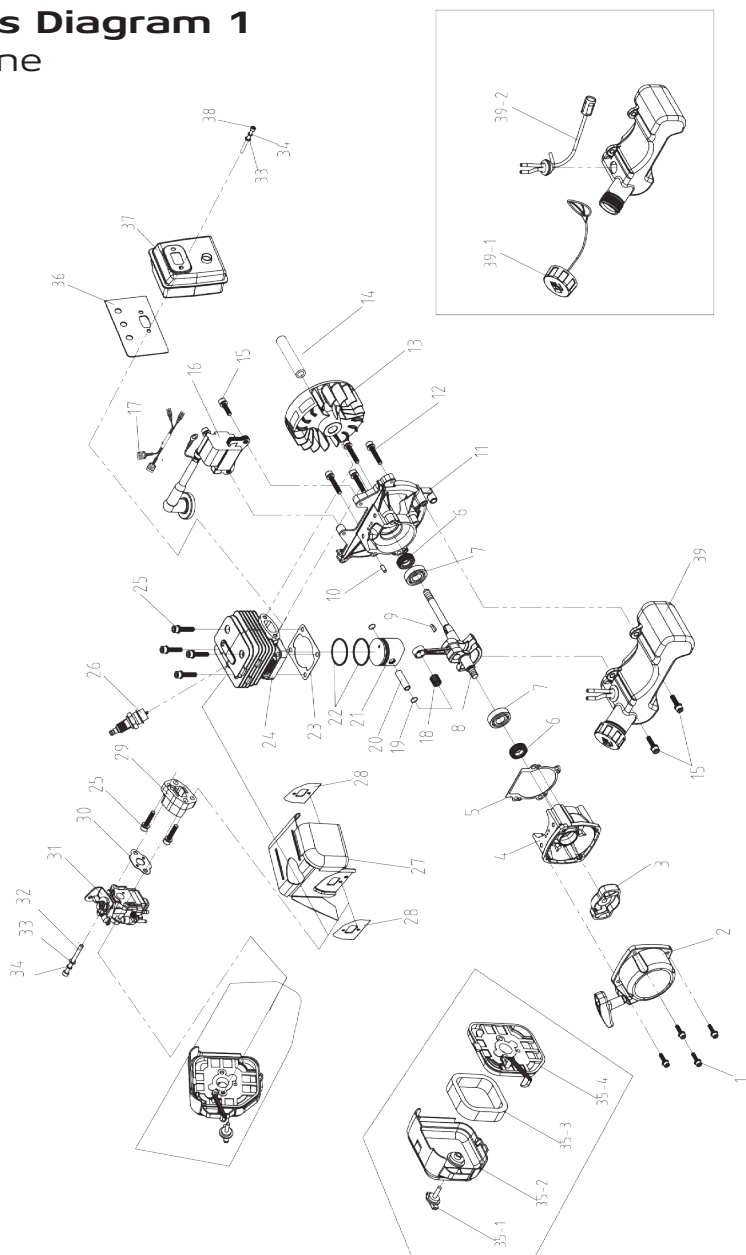
7. DIAGNOSTICS

What to do when...			
Source of problem	Corrective action	Source of problem	Corrective action
1. The engine will not start or will not keep running		3. The engine runs irregularly and lacks in power when revved	
Incorrect starting procedure	Follow the instructions (see chapter 3)	Dirty spark plug or incorrect distance between the electrodes	Check the spark plug (see chapter 5)
Dirty spark plug or incorrect distance between the electrodes	Check the spark plug (see chapter 5)	Carburation problems	Contact your Dealer
Air filter clogged	Clean or replace the filter (see chapter 5)	Bag full or clogged	Empty the bag (see chapter 4)
Carburation problems	Contact your Dealer	4. The engine makes too much smoke	
Intake grille open without having mounted the first vacuum tube	Close the grille or mount the first vacuum tube (see chapter 1)	Incorrect composition of the fuel mixture	Prepare the fuel mixture according to the instructions (see chapter 2)
Blower or vacuum tube not fitted	Fit the tube	Carburation problems	Contact your Dealer
2. The engine starts but is lacking in power		5. The machine starts to vibrate abnormally	
Air filter clogged	Clean or replace the filter (see chapter 5)	Damaged or loose parts	Stop the machine and disconnect the spark plug cap. Inspect for damage. Check for and tighten any loose parts. Have all checks, repair work and replacements carried out by a specialized Dealer only.
Carburation problems	Contact your Dealer		

TECHNICAL INFORMATION

Technical data	Unit	26B-SP / 28BV-SP
Capacity	cm ³	25.4
Power	kw	0.7
Maximum engine rotation speed	min<1	7900
Spark plug		NGK BPMR7A
Mixture (petrol: 2-Stroke oil)		40:1
Fuel tank capacity	ml	650
Acoustic power level guaranteed	dB (A)	110
Weight (Blower/Vacuum collector)		
- Blower	kg	5.6
- Vacuum	kg	6.2
Maximum air speed	kmh	250 (155mph)
Suction Capacity	m ³ / min	12
Mulching Ratio (Vaccum only)		10:1
Collector Volume (Vaccum only)	L	50

Parts Diagram 1 Engine



Parts List 1

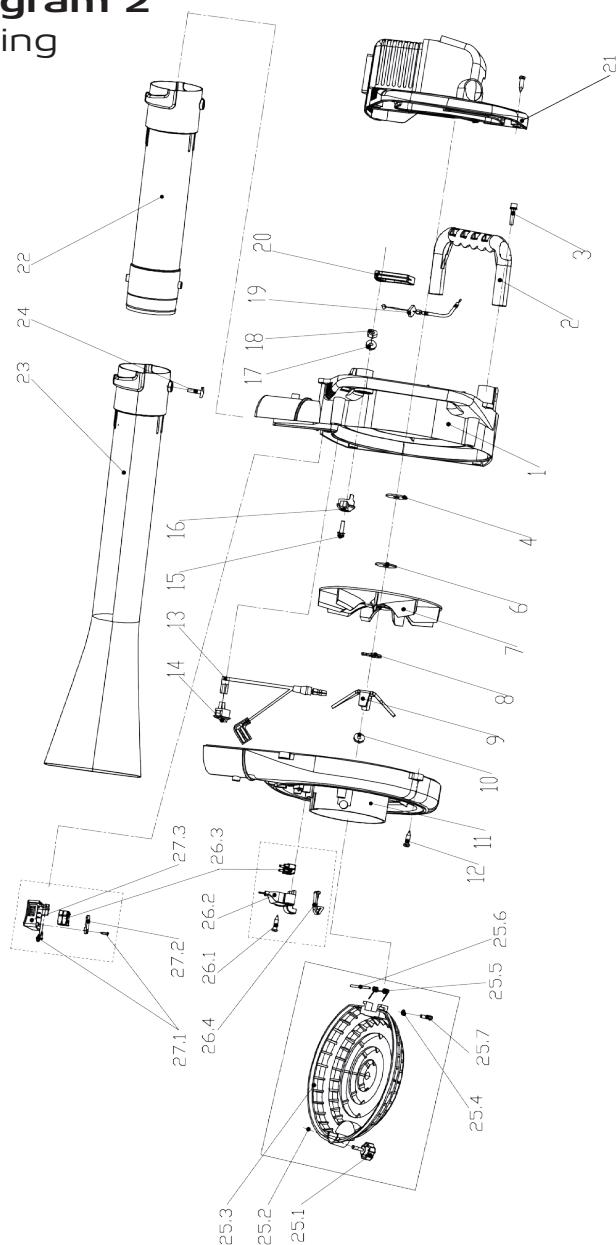
ID No.	Part Number	DESCRIPTION
1	MI701G30416-F	M4X16_ HEX SCREW SET
2	MI5009.31901-black	EASY-STARTER
3	MI5009.34101	STARTER DRIVE PLATE
4	MI5009.33209	BEHIND HALF CRANKCASE
5	MI5009.34601	CRANKCASE SEAL GASKET
6	MI5003.32801	OIL SEAL TC12X22X7
7	MI321010301	BEARING 6001
8	MIT.GBV26E-12	CRANKSHAFT CONNECTING ROD SET
9	MI5009.32701	WOODRUFF KEY 13X3X3.7
10	MI5003.32404	CYLINDRICAL PIN B4X10
11	MI5009.33208	FRONT HALF CRANKCASE
12	MI701G30530	M5X30_ HEX SCREW SET
13	MI5009.31906	FLYWHEEL
14	MIT.GBV26E-025	CRANKSHAFT COVER
15	MI701G30520-F	M5X20_ HEX SCREW SET
16	MI311800033	IGNITION COIL
17	MI312000021	STOP SWITCH WIRE
18	MI5009.32101	NEEDLE BEARING (CRANKSHAFT)
19	MI5009.32401	PISTON PIN CHECK RING
20	MI5009.33203	PISTON PIN
21	MI5009.33204	PISTON
22	MI5009.33202	PISTON RING
23	MI5009.34605	CYLINDER GASKET
24	MI5009.33201	CYLINDER
25	MI701G30525-F	M5X25_ HEX SCREW SET
26	MI5009.31501	SPARK PLUG L8RTC
27	MI331000140	WIND GUIDE PLATE
28	MI341000050	AIR INLET GASKET
29	MI5009.34103	AIR INLET PIPE
30	MI5009.34603	CARBURETOR GASKET
31	MI5009.31401	CARBURETOR, HUALONG - CODE: MR11

Parts List 1

ID No.	Part Number	DESCRIPTION
32	MI320200061	M5X55_ HEX SCREW
33	MI324040301	FLAT GASKET 5
34	MI324110301	SPRING GASKET 5
35-1	MIT.BCB33.05-3	AIR FILTER SCREW
35-2	MIT.HT26D.01-1	COVER, OUTER, AIR FILTER
35-3	MIT.BCB43.01-2	SPONGE, AIR FILTER
35-4	MIT.HT26D.01.1	COVER, INNER, AIR FILTER
36	MI341100020	MUFFLER GASKET
37	MI310300026	MUFFLER
38	MI320200062	M5X60_ HEX SCREW
39	MI311000014	FUEL TANK ASSY
39-1	MIT.GBV26E.08.1	FUEL HOSE ASSY
39-2	MIT.BCE43.10.1	CAP ASSY, FUEL TANK

Parts Diagram 2

26B Housing



Parts List 2

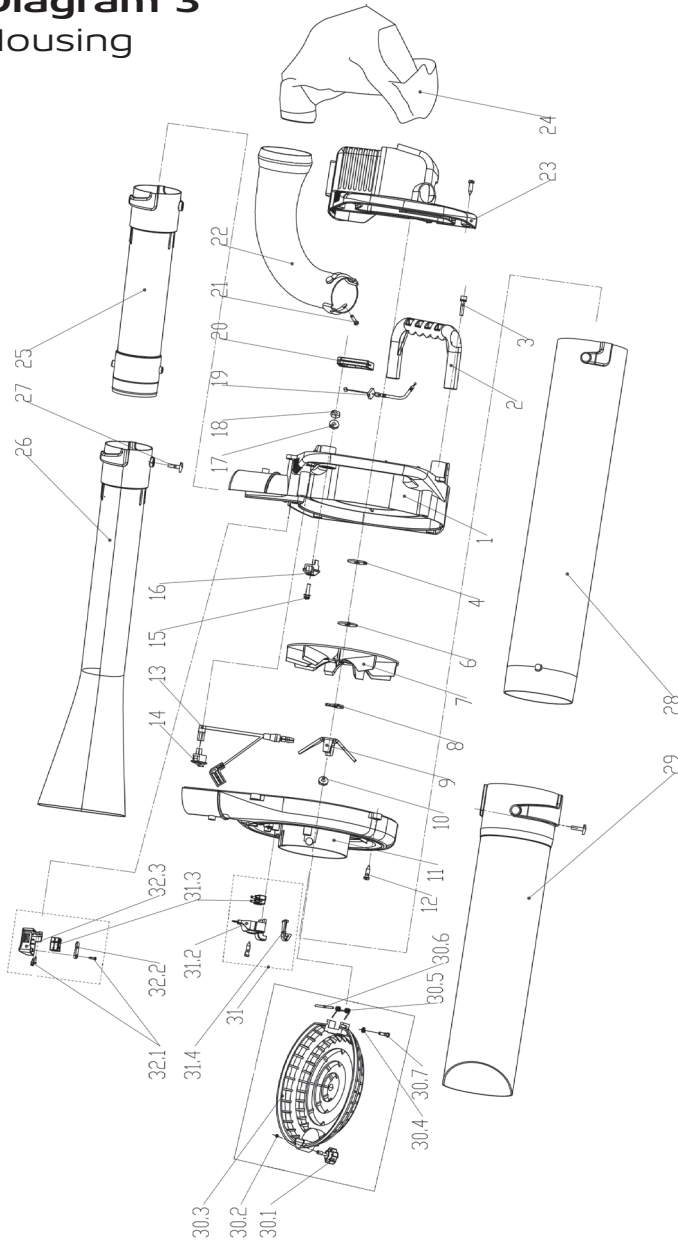
ID No.	Part Number	DESCRIPTION
1	MI340400253	FRONT HALF HOUSING
2	MI340500098	HANDLE
3	MI320300007	SCREW M5X25
4	MIGB/T97.01	FLAT GASKET 8
6	MI320500033	UNDER IMPELLER WASHER
7	MI340400251	IMPELLER
8	MI320500034	ABOVE IMPELLER WASHER
9	MI331000138	MULCHING PLATE
10	MI320400020	M8 NUT
11	MI340400252	BACK HALF HOUSING
12	MICB/T845	SCREW ST4.8*12-H-F
13	MIT.GBV26E.03A	STOP SWITCH WIRE A
14	MI312100004	SWITCH ON/OFF
15	MIGB/T9074.4	M5X30 CREW SET
16	MI340400249	SELF-LOCK THROTTLE TRIGGER
17	MI320400004	M5 HEXAGONAL NUT
18	MI320400003	M6 NUT
19	MI310100097	THROTTLE ROPE
20	MI340100002	THROTTLE TRIGGER
21	MI340400250	ENGINE HOUSING
22	MI340100005	BLOWER TUBE 2
23	MI340100004	BLOWER TUBE 1
24	MI320200207	M5X10 SCREW
25.1	MIT.GBV26E.09	TIGHTENING SCREW
25.2	MIGB/T3452.1	O SHAPE SEAL GASKET
25.3	MIT.GBV26E.019A	FAN COVER
25.4	MIGB/T96.2	FLAT GASKET 5.5X15X1
25.5	MIT.GBV26E.008	SPRING
25.6	MIT.GBV26E.007	SPRING SCREW
25.7	MIGB/T845	ST4.8*12-H-F SCREW

Parts List 2

ID No.	Part Number	DESCRIPTION
26.1	MIGB/T845	SCREW ST4.8*16-H-F
26.2	MIT.GBV26E-023A	SWITCH HOUSING 1
26.3	MIT.GBV26E.04A	STOP SWITCH WIRE A
26.4	MIT.GBV26E-022A	SWITCH FEELER
27.1	MIGB/T845	SCREW ST2.9*6.5-H-F
27.2	MIT.GBV26E-026	SWITCH HOUSING 2
27.3	MIT.GBV26E-027	SWITCH PLATE

Parts Diagram 3

28BV Housing



Parts List 3

ID No.	Part Number	DESCRIPTION
1	MI340400253	FRONT HALF HOUSING
2	MI340500098	HANDLE
3	MI320300007	SCREW M5X25
4	MIGB/T97.01	FLAT GASKET 8
6	MI320500033	UNDER IMPELLER WASHER
7	MI340400251	IMPELLER
8	MI320500034	ABOVE IMPELLER WASHER
9	MI331000138	MULCHING PLATE
10	MI320400020	M8 NUT
11	MI340400252	BACK HALF HOUSING
12	MICB/T845	SCREW ST4.8*12-H-F
13	MIT.GBV26E.03A	STOP SWITCH WIRE A
14	MI312100004	SWITCH ON/OFF
15	MIGB/T9074.4	M5X30 CREW SET
16	MI340400249	SELF-LOCK THROTTLE TRIGGER
17	MI320400004	M5 HEXAGONAL NUT
18	MI320400003	M6 NUT
19	MI310100097	THROTTLE ROPE
20	MI340100002	THROTTLE TRIGGER
21	MIGB/T818	M5X10 CREW SET
22	MI340100003	CONNETION CURVED TUBE
23	MI340400250	ENGINE HOUSING
24	MI341200034	CONNECTION BAG
25	MI340100005	BLOWER TUBE 2
26	MI340100004	BLOWER TUBE 1
27	MI320200207	M5X10 SCREW
28	MI340500099	VACUUM TUBE 1
29	MI340500100	VACUUM TUBE 2
30.2	MIGB/T3452.1	O SHAPE SEAL GASKET

Parts List 3

ID No.	Part Number	DESCRIPTION
30.3	MIT.GBV26E.019A	FAN COVER
30.4	MIGB/T96.2	FLAT GASKET 5.5X15X1
30.5	MIT.GBV26E.008	SPRING
30.6	MIT.GBV26E.007	SPRING SCREW
30.7	MIGB/T845	ST4.8*12-H-F SCREW
31.1	MIGB/T845	SCREW ST4.8*16-H-F
31.2	MIT.GBV26E-023A	SWITCH HOUSING 1
31.3	MIT.GBV26E.04A	STOP SWITCH WIRE A
31.4	MIT.GBV26E-022A	SWITCH FEELER
32.1	MIGB/T845	SCREW ST2.9*6.5-H-F
32.2	MIT.GBV26E-026	SWITCH HOUSING 2
32.3	MIT.GBV26E-027	SWITCH PLATE



VERIFICATION OF MD COMPLIANCE

No.: SHES160100017102TLC
 Applicant: Zhejiang Sunseeker Industrial Co., Ltd.
 988, Jinde Rd, Jiangdong Industrial Park, Jinhua, Zhejiang,
 321042, China
 Manufacturer: Same as applicant
 Factory: Same as applicant
 Product Description: Gasoline engine powered vacuum and blower
 Model No.: GBV26E
 Additional Information (if any): Engine power: 0.7 KW; Cylinder capacity: 25.4cm³;
 Max. engine speed: vacuum / blower: 7500 / 7900 min⁻¹
 Sufficient samples of the product have been tested and found to be in conformity with
 Test Standard: EN15503: 2009+A2: 2015
 as shown in the
 Test Report Number(s): SHES160100017102

This Verification of MD Compliance has been granted to the applicant based on the results of tests, performed by Laboratory of SGS-CSTC Standards Technical Services (Shanghai) Co., Ltd. on sample of the above-mentioned product in accordance with the provisions of the relevant specific standards and the Machinery Directive 2006/42/EC. The CE mark as shown below can be affixed, under the responsibility of the manufacturer, after completion of an EC Declaration of Conformity and compliance with all relevant EC Directives. The affixing of the CE marking presumes in addition that the conditions in annexes III of the Directive are fulfilled.



Andrew Zhai
 E&E Safety Lab Technical Manager
 SGS-CSTC

2017-02-27

Copyright of this verification is owned by SGS-CSTC Standards Technical Services (Shanghai) Co., Ltd. and may not be reproduced other than in full and with the prior approval of the General Manager. This verification is subjected to the governance of the General Conditions of Services, printed overleaf.

Member of SGS Group (Société Générale de Surveillance)

EEC-F03/ Rev.1.0/ 2016-07-15
 Page 1 of 1



SGS-CSTC Standards Technical Services (Shanghai) Co., Ltd.
 Testing Center for Services

Unless otherwise agreed in writing, this document is issued by the Company subject to its General Conditions of Service printed overleaf, available on request or accessible at <http://www.sgs.com/en/Terms-and-Conditions.aspx> and, for electronic format documents, subject to Terms and Conditions for Electronic Documents at <http://www.sgs.com/en/Terms-and-Conditions/Terms-e-Documents.aspx>. Attention is drawn to the limitation of liability, indemnification and jurisdiction issues defined therein. Any holder of this document is advised that information contained hereon reflects the Company's findings at the time of its intervention only and within the limits of Client's instructions, if any. The Company's sole responsibility is to its Client and this document does not exonerate parties to a transaction from exercising all their rights and obligations under the transaction documents. This document cannot be reproduced in whole or in part without the prior written approval of the Company. Any unauthorized alteration, forgery or falsification of the content or appearance of this document is unlawful and offenders may be prosecuted to the fullest extent of the law. Unless otherwise stated the results shown in this test report refer only to the sample(s) tested and such sample(s) are retained for 30 days only.

NO.588 West Jindu Road, Songjiang District, Shanghai, China 201612 t (86-21)61915666 f (86-21)61915678 www.sgs.com.cn
 中国·上海·松江区金都西路588号 邮编: 201612 t (86-21)61915666 f (86-21)61915678 e sgs.china@sgs.com

Member of the SGS Group (SGS SA)

26B-SP / 28BV-SP



NOTES:

CONDITIONS OF WARRANTY

The manufacturer warrants the product against faulty materials and workmanship for a standard 1 year period and thereafter for the set period specific to each range from the date of purchase. Warranty does not extend to failure due to fair wear and tear.

SP	- 1 Year
SELECT	- 3 Years (Subject to yearly servicing)
PREMIUM	- 5 Years (Subject to yearly servicing)
PRO	- 5 Years Domestic / 3 Years Commercial (Subject to yearly servicing)

(Extended warranty is subject to online registration and yearly servicing)

SP, SELECT and PREMIUM ranges used for commercial purposes have a warranty period of 3 months from the date of purchase.

The manufacturer undertakes to replace any spare parts that are classified as defective by an appointed Mitox service dealer. The manufacturer will not accept liability for the replacement of the machine, either partially or wholly, and /or consequential damages and /or interest charges either directly or indirectly.

Warranty does not cover failure due to:

Insufficient maintenance.

Incorrect fuel mixture and stale fuel.

Abnormal use or accidental damage.

Incorrect assembly, adjustment or operation of the product.

Spare parts that are subject to wear e.g. bag, blades, bearings, cables, guards, deflectors, spark plugs, air filters etc.

Neither does warranty extend to:

Freight and packing costs.

Use of non-genuine spare parts i.e. those from another manufacturer.

Use of the machine for any other purpose than that for which it was designed.

Use and maintenance of the machine in a manner not described in the owner's manual.

As part of our policy of continuous product improvement, we reserve the right to alter or amend this specification without notice. As a result, the product may differ from the information contained herein but any alteration will only be implemented without notice if it is classified as an improvement to the above specification.

READ THE MANUAL CAREFULLY BEFORE OPERATING THE MACHINE

When ordering spare parts, please quote the part number, this can be found in the parts list included in this manual. Retain your proof of purchase, without which no warranty can be offered.

Mitox Garden Machinery, Wincanton Business Park, Wincanton, Somerset, BA9 9RS